

CREALITY

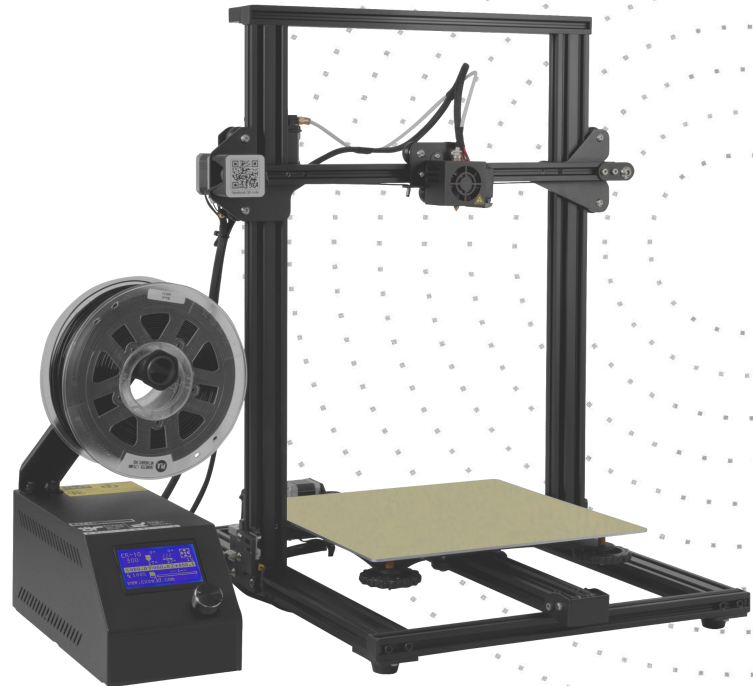
CR-10mini Series 3D Printer User Manual

The User Manual is for the CR-10 Series of 3D printers. It is also applicable for the CR-10S/CR-10 S4/CR-10 S5.

But CR-10 mini without T-Bracket (Right) & Decoration Strip.

Due to the different types of devices ,Hardware and software upgrade, the devices have little different, it is normal phenomenon. Subject to actual device received.

Detailed instructions for using are available in the TF card.



Parameters

Basic Parameters					
Model	CR-10	CR-10S	CR-10 S4	CR-10 S5	CR-10mini
Printing Size	300*300*400mm	300*300*400mm	400*400*400mm	500*500*500mm	300*220*300mm
Molding Tech.	FDM				
Nozzle Number	1				
Slice Thickness	0.1mm-0.4mm				
Nozzle Diameter	Standard 0.4mm				
Precision	±0.1mm				
Filament	1.75mm PLA				
File Format	STL/OBJ/AMF				
Working Mode	Online or TF card offline				
Slice Software	Creality Slicer/Cura/Repetier-Host/Simplify3D				
Power Supply	Input:AC 115V/230V 50/60Hz Output:DC 12V				
Total Power	270W	270W	250W	270W	270W
Bed Temp.	≤100°C	≤100°C	≤60°C	≤60°C	≤100°C
Nozzle Temp.	≤250°C				
Resume Print	NO	Yes	Yes	Yes	Yes
Filament Detector	NO	Yes	Yes	Yes	NO
Dual Z-Axis	NO	Yes	Yes	Yes	NO
language Selection	NO	EN/CN			
Operating System	Windows XP/Vista//7/8/10 MAC/Linux				
Printing Speed	≤180mm/s, Normal 30-60mm/s				

CONTENTS

Dear consumers,

Thank you for choosing our products. For the best experience, please read the instructions before operating the Printer. Our 3D team will always be ready to give you the best service. Please contact us via the phone number or e-mail address provided at the end when you encounter any problem with the Printer.

For a better experience in using our product, you may learn how to use the Printer in the following ways:

View the accompanied instructions and videos in the TF card.

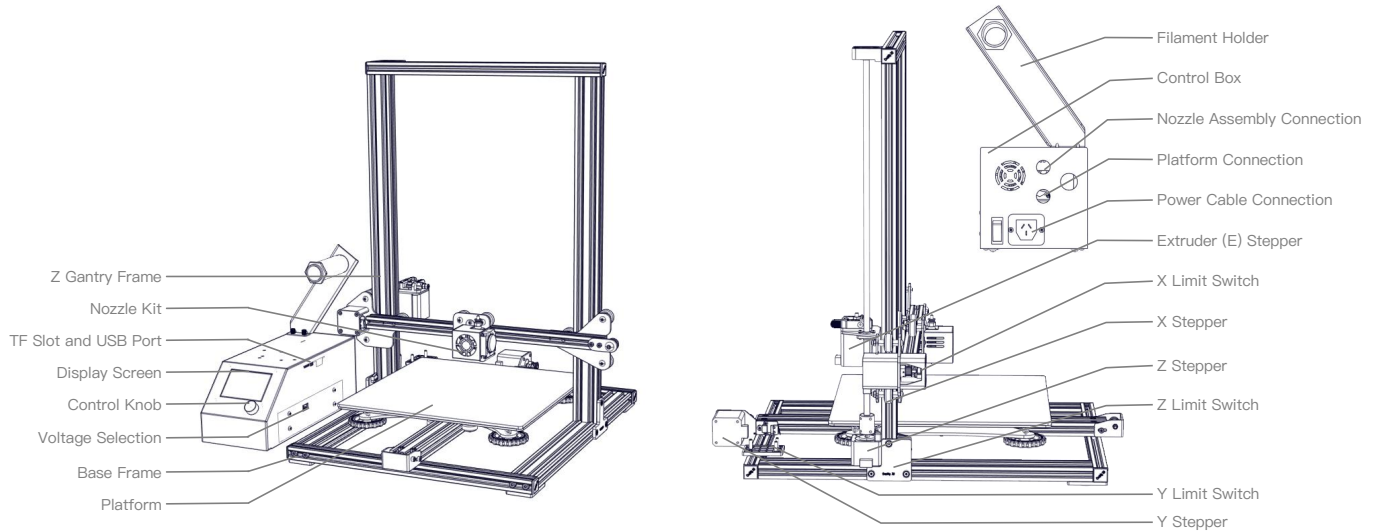
Visit our official website www.creality3d.cn You will find relevant software/hardware information, contact details and operation and maintenance instructions on the website.

Introduction.....	1
General List.....	2
Device Installion.....	3
Cable Connection.....	4
Screen Information.....	5
Loading Filament.....	6
Platform Adjustment.....	7
Software Installation.....	8
For the First Printing.....	9

NOTES

1. Do not use the printer any way other than described herein in order to avoid personal injury or property damage.
2. Do not place the printer near any heat source or flammable or explosive objects. We suggest placing it in a well-ventilated, low-dust environment.
3. Do not expose the printer to violent vibration or any unstable environment, as this may cause poor print quality.
4. Before using experimental or exotic filaments, we suggest using standard filaments such as ABS or PLA to calibrate and test the machine.
5. Do not use any other power cable except the one supplied. Always use a grounded three-prong power outlet.
6. Do not touch the nozzle or printing surface during operation as they may be hot. Keep hands away from machine while in use to avoid burns or personal injury.
7. Do not wear gloves or loose clothing when operating the printer. Such cloths may become tangled in the printers moving parts leading to burns, possible bodily injury, or printer damage.
8. When cleaning debris from the printer hotend, always use the provided tools. Do not touch the nozzle directly when heated. This can cause personal injury.
9. Clean the printer frequently. Always turn the power off when cleaning, and wipe with a dry cloth to remove dust, adhered printing plastics or any other material off the frame, guide rails, or wheels . Use glass cleaner or isopropyl alcohol to clean the print surface before every print for consistent results.
10. Children under 10 years of age should not use the printer without supervision.

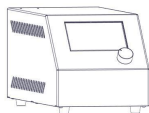
A、 Introduction



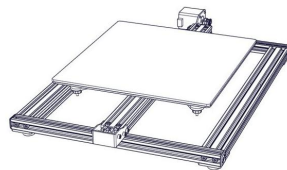
B、 General List



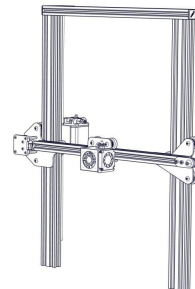
Tool Box



Control Box



Base Frame



Gantry Frame

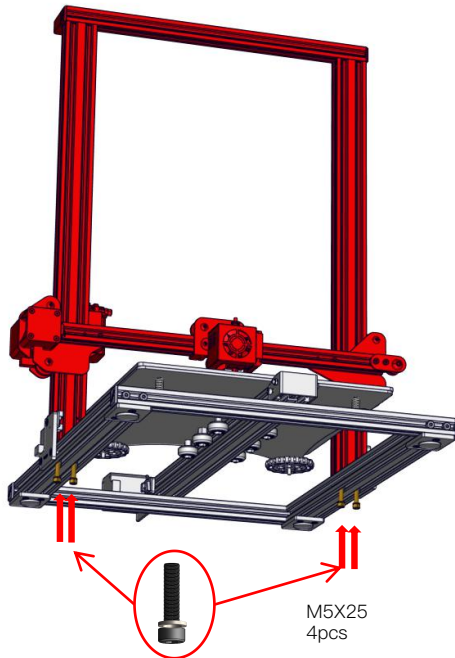
◆ Tool list

No.	Image	Name	Qty	No.	Image	Name	Qty	No.	Image	Name	Qty
1		Spool & Nuts	1set	7		Power Cable	1	13		Spade	1
2		Spool Holder	1	8		USB Cable	1	14		Cable Ties	1set
3		TF Card & Card Reader	1set	9		PTFE Tubing (spare part)	1	15		Hex keys, Wrench & Screwdriver	1set
4		T-Bracket (Right)	1	10		Nozzle Cleaner	1	16		Spare Parts	1set
5		T-Bracket & Z Limit Switch (Left)	1	11		Filament (200g)	1	17		Decorative Strip	1
6		M5X25 Bolt & Lock Washer	4 sets	12		Diagonal Pliers	1	18		Thumb Screw	3

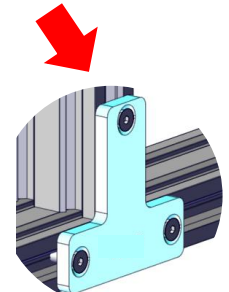
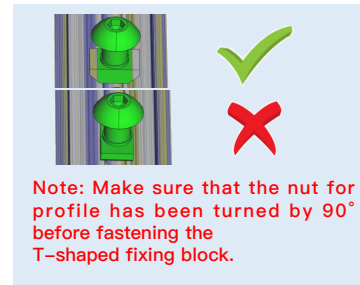
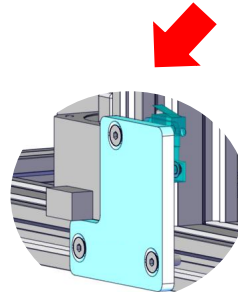
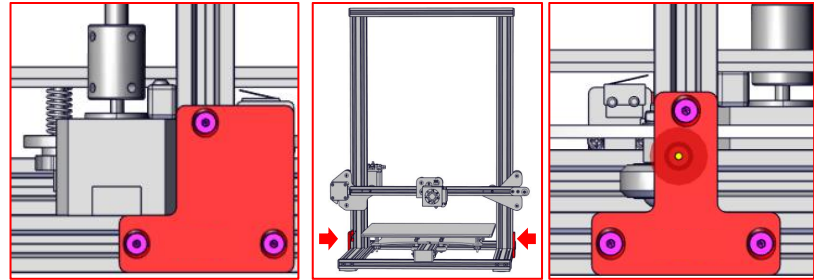
*CR-10 mini without T-Bracket (Right) & Decoration Strip.

C、 Device Installtion

◆ Install the Gantry Frame

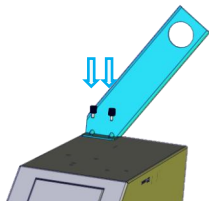
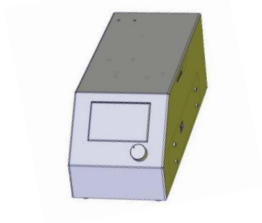


◆ Install the T-shaped fixing block.

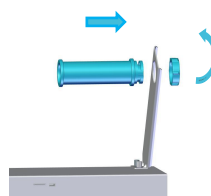


*CR-10 mini without T-Bracket (right).

◆ Install the Rack



Attach the Bracket with two thumb screws.



Attach Spool Holder with included Nuts

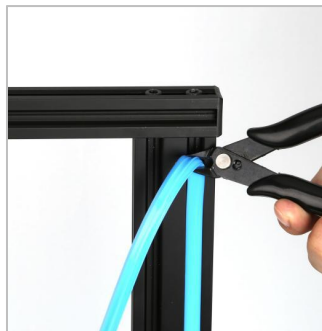


Finished

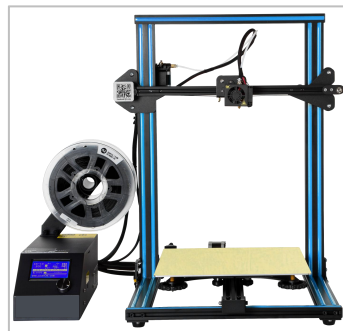
◆ Install decoration strip



Install decoration belt into the notch, starting from one end.



Cut off the excess material with the diagonal pliers

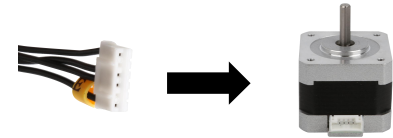
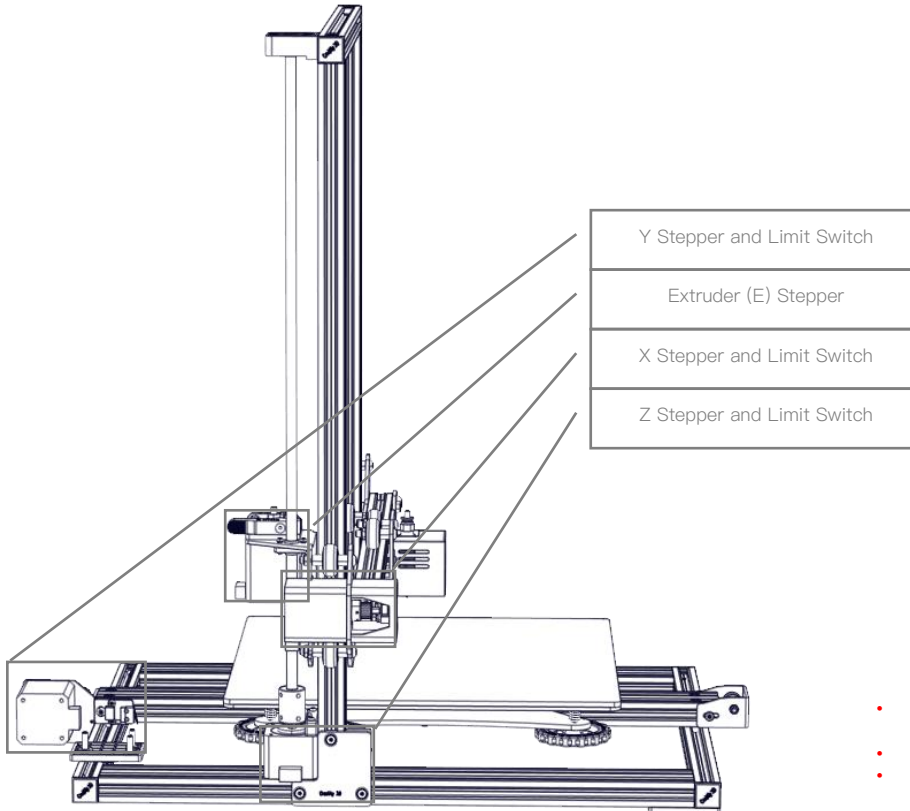


Attach the Decorative Trim to all parts needing to be decorated.

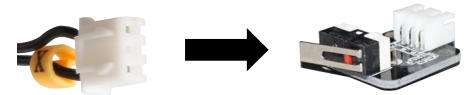
*The decoration Strip is available in various colors. The pictures above are for reference only.

*CR-10mini without Decoration Strip.

D、 Introduction



Connect the Stepper Motors according to the yellow labels on the 6pin (4-wire) side.



Connect the Limit Switches according to the yellow labels on the 3pin (2-wire) side.



Connect the aviation connectors to the ports with corresponding pins

- Select the correct input voltage to match your local mains (230V or 115V)
- Damage can occur if voltage is set incorrectly.
- Make sure the power cable is connected.

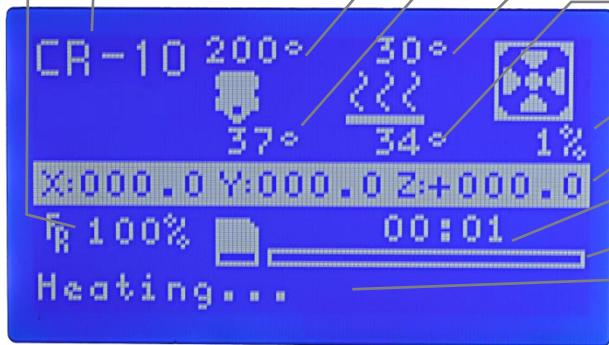
E、 Screen Information



Push: OK/Enter Sub Menu
Turn: Change Option/Value

Print Speed

Device Model



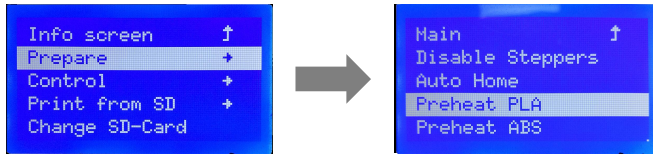
- Set Temperature of the Nozzle
- Current Temperature of the Nozzle
- Set Temperature of the Hot Bed
- Current Temperature of the Hot Bed
- Part Cooling Fan Speed
- Current Location of the nozzle
- Print Time
- Print Progress
- Prompt Message

Screen Options		
Menu	Sub Menu	Explanation
↑Info Screen↑	↑main↑	Return
Prepare→	Disable Steppers	Moving X Y Z axis by your hands
	Auto Home	return to the origin
	Preheat PLA	
	Preheat ABS	
	Cooldown	Close and cooldown the nozzle
Control→	Move Axis→	Moving X Y Z axis or Extruder by given value.
	Temperature→	Heat the nozzle and the bed or change fan speed by given value
	Restore Failsafe	Restore factory setting
No card /Print from SD		Select the printing model
Init. SD-Card /Change SD-Card		download or update the memory card information
Printing		
Tune→	Speed	Change Printing Speed by given value
	Nozzle	Change the temperature by given value
	Bed	Change the temperature by given value
	Fan Speed	Change Fan Speed by given value
	Flow	Change filament flow by given value
Pause Print		
Stop Print		

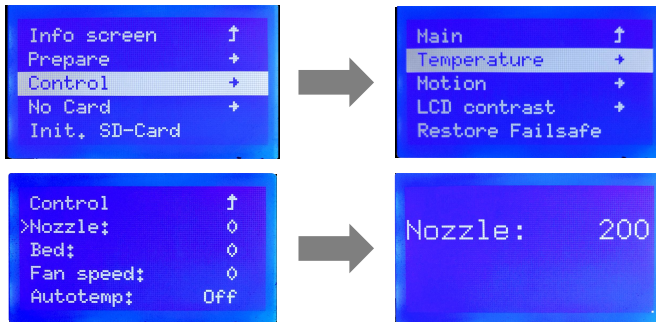
F、 Loading Filament

1、 Preheat

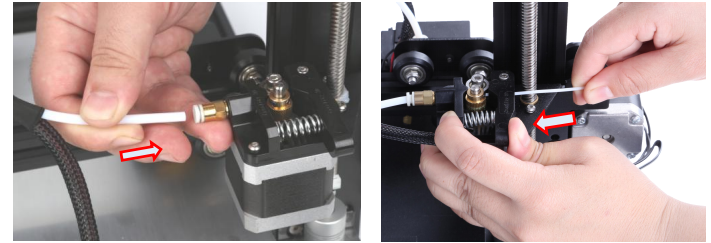
Method 1



Method 2



2、 Feed Filament

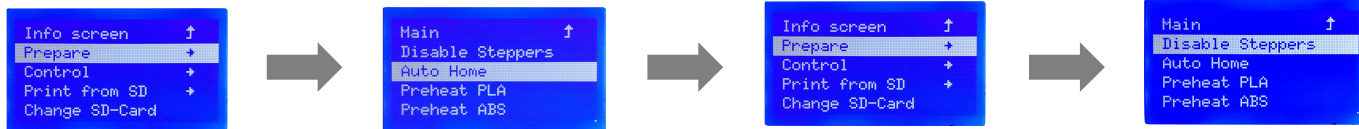


Press and hold the extruder lever then insert the 1.75mm filament through the small hole of the extruder. Continue feeding until you see filament come out the nozzle.

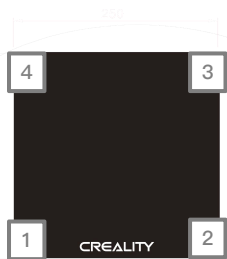
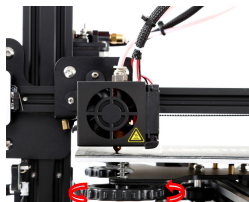
Tip: How to Replace the Filament?

- 1、 Cutting filament near the Extruder and slowly feed new filament until they are fed into the new filament.
- 2、 Preheating the nozzle and withdraw the filament quickly and feed the new filament.

G、 Bed Leveling



1. Prepare →Auto Home. Waiting for the nozzle to move to the left/front of the platform.→ Prepare→Disable Steppers(Close stepper drive, release motor)



		<p>⊗</p> <p>The nozzle is too far away from the platform, so the consumables can not adhere to the platform.</p>
		<p>⊙</p> <p>Filament are extruded evenly, just sticking on the platform.</p>
		<p>⚠</p> <p>The nozzle is too close to the platform, and the filament are not extruded enough, even scraping the platform.</p>

2. Move the nozzle the front/left leveling screw and adjust the platform height by turning the knob underneath. Use a piece of A4 paper (standard printer paper) to assist with the adjustment, making sure that the nozzle lightly scratches the paper.

3. Complete the adjustment of the screw on all 4 corners.

4. Repeat above steps 1–2 times if necessary.

H、 Software Installation



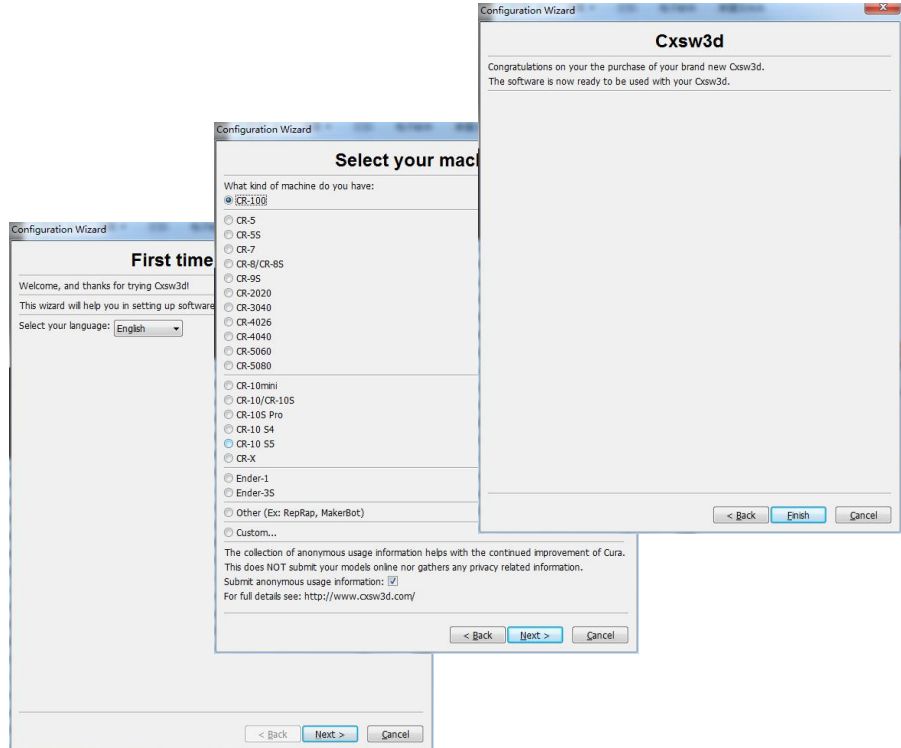
Creality
Slicer_1.2.3

1. Double click to install the software.



Creality Slicer

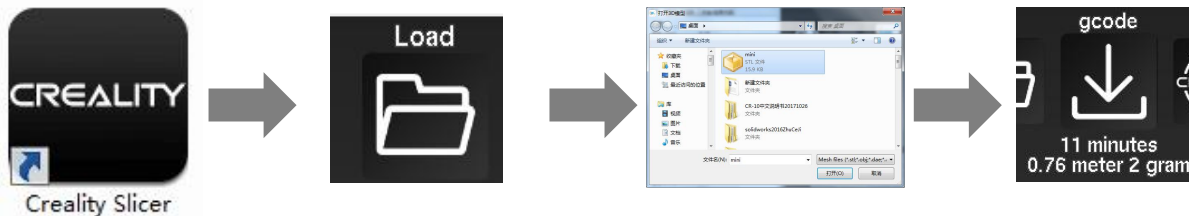
2. Double click to open the software.



3. Select language→Next→Select your machine→Next→Finish.

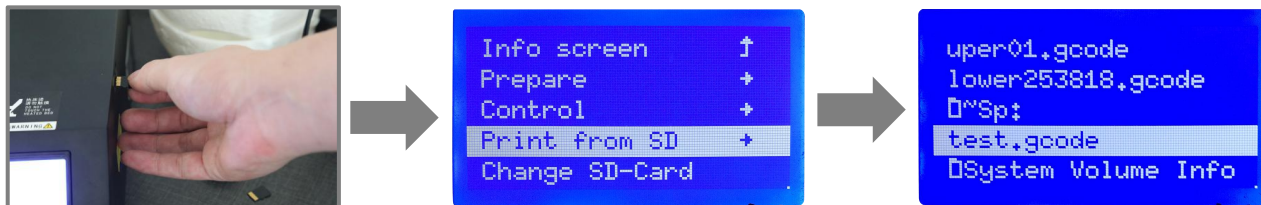
I、 First Printing

1.Slicing



Open the software→Load→Select the file→Wait for slicing to finish ,and save the gcode file to TF card.

2.Printing



Insert the TF card→ Print → Select the file to be printed.

After– Sales Service

Service

1, The printer can be returned within seven days, 15 days replacement, one year warranty, lifetime maintenance.

Replacement requirement

1. The appearance of the product is intact, without damage, scratches, smudges, cracks, deformation, etc.;
2. Machine parts, tools and others are complete;
3. Provide a complete and valid purchase invoice and warranty, product number should be the same.

Warranty coverage

1. The following accessories are not included in the warranty coverage if they are not damaged by transportation: platform sticker; platform forming plate; acrylic cover; card reader and TF card; platform glass; USB cable; filament; rack and tools,etc.
2. Profile: Before we deliver the goods, we will do the machine test, so maybe there will be light scratch, or due to long–distance transportation, which scratch the profile a little bit. in the premise of not affecting the normal use, in principle, not within the scope of warranty;
3. Nozzle assembly (nozzle, heating block, throat pipe,heat sink, Teflon tube, etc.) warranty period is 3 months, if it is damage after the warranty expires, you need to purchase another one;
4. Motherboard, LCD display, power supply, hot bed,warranty period is 12 months, if there are quality problems, you can get free maintenance; over the warranty period, can be sent back to the original factory maintenance, the users need to bear the return shipping and maintenance costs;
5. Not included in warranty coverage:
 - (1) It is not possible to provide an effective after–sales service card or serial number;
 - (2) The whole machine and components exceed the warranty period;

- (3) Equipment failure or damage caused by unauthorized modification of the equipment (private modification includes: 1. modification of the nozzle assembly; 2. modification of the machine structure; 3. use of third–party components; 4. use of third–party firmware procedures or change the original Factory firmware program, etc.);
- (4) Equipment failure or damage due to incorrect installation and use;
- (5) Equipment failure or damage caused by the use of the equipment in a working environment not specified by the product;
- (6) Equipment failure or damage due improper use (beyond workload, etc.) or maintenance (moisture, etc.);
- (7) Equipment failure or damage due to the use of other branded components or low quality consumables.

Statement:

For better highlighting the function and effectiveness of 3d printer and promoting the development of global market economic, strengthening the user self–discipline of 3d industry and establishing a good image of 3d printing, since Creality 3d printer have passed all kinds of authorized product certificates and quality management system.hereby we declare that it is strictly forbidden to use our printer to print any products or equipment that are in violation of the specific country and regions legislation.

The revision date: April 24,2019



SHENZHEN CREALITY 3D TECHNOLOGY CO.,LTD.
11F & Room 1201,Block 3,JinChengYuan,Tongsheng Community,Dal
ang,Longhua District,Shenzhen,China,518109
Official Website: www.creality3d.cn
Tel: +86 755-2105 9455
E-mail: info@creality3d.cn cs@creality3d.cn

